

---

## September 2023

---



### Troy's Take

---

Of all Nature's seasons, Fall is my favorite. Something about the cooling temperatures, the colors of the leaves transforming and the ripening, harvesting storage of crops reminds me that our world is perpetually in flux.

This year, Fall heralds more change than usual here at the Huck, and across Penn State.

[Read more](#)

---

## HUCK LEADERSHIP NEWS

---

### Shearer and Koslicki named IGDP program chairs

---

Huck's Bioinformatics and Genomics and Integrative Physiology graduate programs have transitioned to new leadership.

[Read more](#)





## Center for Root and Rhizosphere Biology appoints Burghardt director

---

When the Center for Root and Rhizosphere Biology (CRRB) meets for the first time this semester, at 2:30 on September 29 in 202 Ferguson, it will do so under new leadership.

[Read more](#)

---

## HUCK RESEARCH NEWS

---

### Seed grants fund research collaborations with minority-serving institutions

---

Awardees have been selected for Penn State's new Inter-Institutional Partnerships for Diversifying Research initiative.

[Read more](#)

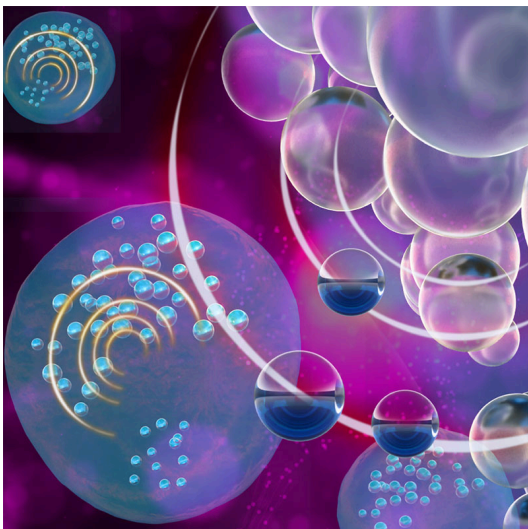


### Bubbles could reveal immune cell secrets

---

Penn State researchers develop novel bubble-based technique to watch immune cells at work.

[Read more](#)

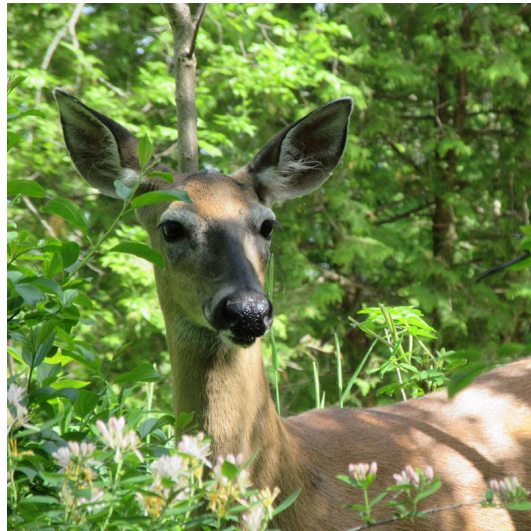


## **Penn State leads testing of 58 wildlife species for SARS-CoV-2**

---

Researchers will collect samples from wildlife to monitor for potential spillback to humans.

[Read more](#)

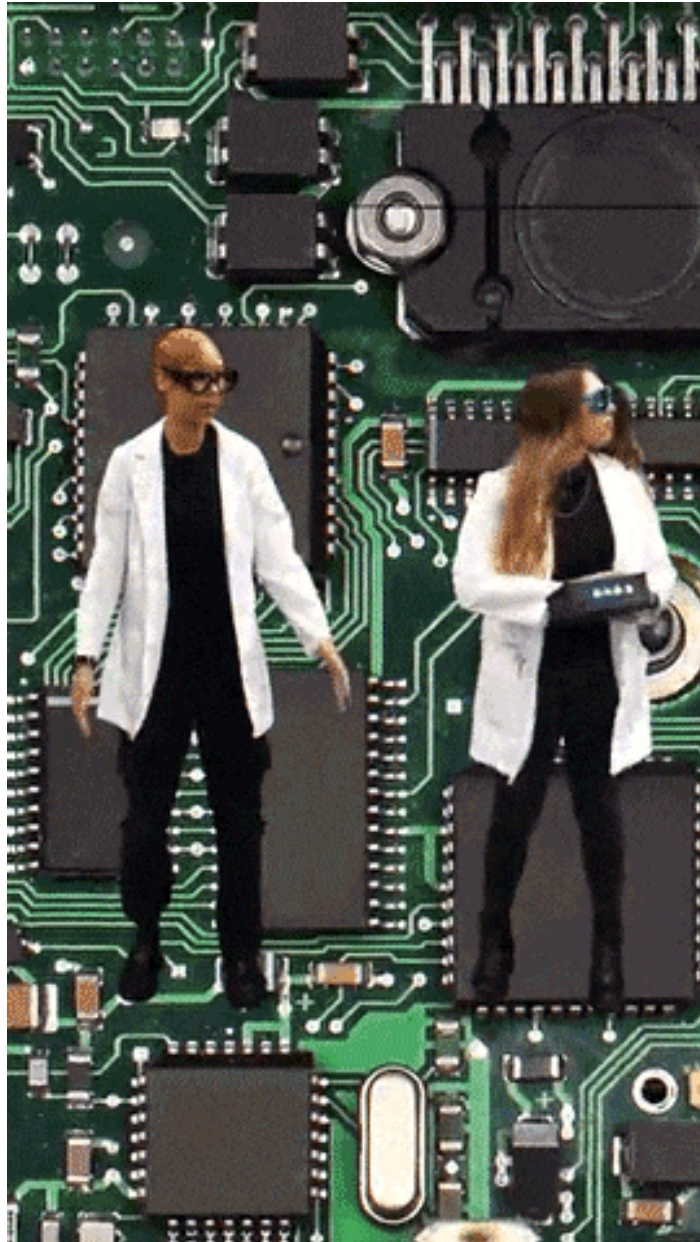


---

**HUCK MEDIA**

---





---

**Freddie runs amok through Huck's hard drives!**

The [latest episode](#) of our [Free-Range Science](#) video series dives (quite literally) into the subject of computational biology.

**More**

---

**24**  
**Media Mentions**  
September 2023  
[VIEW](#)

**19**  
**News Stories**  
September 2023  
[VIEW](#)



*Copyright © 2023 Pennsylvania State University. All rights reserved.*

You have received this email because you are a student, faculty member, or donor to the Pennsylvania State University, or you have signed up to receive email at [psu.edu](https://psu.edu).

**Our mailing address is:**  
**Huck Institutes of the Life Sciences**  
**201 Life Sciences Building**  
**University Park, PA 16802**

[Add us to your address book](#)

Do you want to change how you receive these emails?  
You can [update your preferences](#) or [unsubscribe from this list](#).